

ROCKLIFF
PIERZCHAJLO

Architects & Planners Ltd



OCTOBER 2006

VOLUME 1 / ISSUE 5

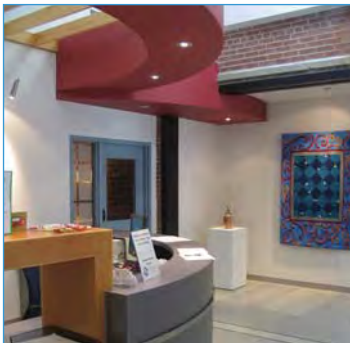
blue PRINT

NEWSLETTER

NEW SUPPORTIVE HOUSING FACILITY GETS ENERGY EFFICIENCY GRANT

RPAP's new 40 unit supportive housing facility in Vegreville was recently awarded a grant from Natural Resources Canada's Office of Energy Efficiency. Century Park exceeded the national energy efficiency standards by an incredible 58%! The Commercial Building Incentive Program (CBIP) provides design assistance and funding to eligible applicants to offset the cost of additional design and engineering services required to significantly improve a building's energy performance. At today's energy rates, it is estimated that

Century Park will save over \$47,000 per year in heating and power costs! ●



BIG NEWS

ALBERTA ART COLLECTION HAS A NEW HOME!

RPAP is pleased to announce that construction is complete on the Alberta Foundation for the Arts facility, just north of Grant MacEwan College in Edmonton. The former warehouse has undergone extensive renovations to provide the AFA with over 4300m² of restoration, exhibition and administration space, as well as short and long-term storage vaults for Alberta's art collection. The vault utilizes a "room-within-a-room" design to ensure precise climate control and upgraded security for the AFA's extensive collection. The project was a partnership between RPAP and Patti L. Swanson Architect. ●



CT CENTRE A FIRST FOR CAMROSE

RPAP was engaged by East Central Health to design the very first CT centre for the region, at St. Mary's Hospital in Camrose. In addition to CT scanning capabilities, the facility will also offer mammography and ultrasound services to the community. CT (Computed Tomography) is a medical imaging process whereby x-rays produce multiple "slices" of a subject, which can be used to generate detailed 3D views of internal anatomy. The scanner will be up and running in the near future. ●

UNDER CONSTRUCTION

- Working drawings are underway for Fire Rescue Services Station Number 5, which is aiming for LEED Silver or better.
- Design work has begun on a new Level II Lab for the University of Alberta for the study of prions and folding diseases.
- Construction has just begun on the

Vermilion Continuing Care Centre. It will replace the aging Alice Keith Nursing Home with a new 48 bed facility.

- The Viking Health Centre is now entering Contract Documents phase, with construction scheduled to begin as soon as the snow melts.