

ROCKLIFF
PIERZCHAJLO

Architects & Planners Ltd



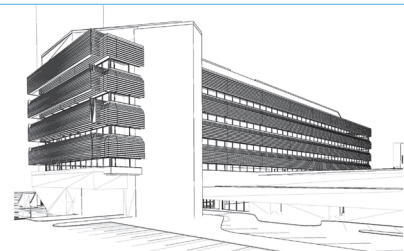
FEBRUARY 2015

blue PRINT

NEWSLETTER

REPLACING THE BUILDING ENVELOPE ON AN ACTIVE HOSPITAL

It's one thing to design a brand new health care facility (something RPAP has done numerous times) but it's another thing to replace the exterior wall and roof systems of a fully functioning hospital. This was the challenge we faced when awarded the building envelope replacement for the Northern Lights Regional Health Centre in Fort McMurray. The original construction documents were initially used to prepare as-built drawings which were then compared to a 3D digital building scan to identify any differences or conflicts. Early on it became obvious that the new building envelope system would have to maintain the interior gypsum board face and framing so there would be minimal disruption to the building; the only disruption would be the window replacement.



The new envelope would then be applied onto these existing materials and constructed from the inside out. It also would need to be a system that could be installed incrementally depending on the season or facility schedule but also meet the "Blue Book" standards of Alberta Infrastructure for Pressure Equalized Rain Screen Insulated Structure Technique (PERSIST). We have just submitted the Schematic Design Report and a number of options will be reviewed. Stay tuned! ●



BIG NEWS

RPAP ASSISTS WITH ASLI GRANT APPLICATIONS

The last few months of 2014 saw a flurry of activity in our office as we assisted a number of clients with applications for the Alberta Government's Affordable Supportive Living Initiative (ASLI) grant program. In total we did eight different design submissions. ASLI is a capital grant program that provides funding to develop long-term care and affordable supportive living spaces in the province. The design work was used to support the written portion of each application. Special attention had to be paid to ensure each project met the mandatory grant design requirements. We look forward to hearing the results. ●

RABBIT EAR CHAIR



Designed by SANAA (Sejima and Nishizawa and Associates), this bent plywood chair takes its inspiration from the rabbit who, as many

know, is the official RPAP mascot. Interestingly, the portion of the chair aligned with the back is removed, apparently making the chair more comfortable by reducing pressure on the spine. The chair was initially designed for the Japanese market with a second larger version following a few years later for the North American market providing an interesting comment on the two cultures. Time for some new chairs! ●

UNDER CONSTRUCTION

- A development permit application for a new 147 resident senior's facility in the Baranow Community of North Edmonton was recently submitted to the city.
- Construction is due to be completed on a new 52 resident senior's apartment building for GEF Seniors Housing in the Ottewell Neighbourhood of Edmonton.
- Construction is well underway for a new 114 resident Points West Living assisted living facility in Red Deer.
- Construction documents are complete for the new Fort McMurray Health and Wellness Centre. We are awaiting approval to go to tender.
- Concept design work was recently completed for an affordable senior's apartment building and lodge on a City of Edmonton surplus school site.