

ROCKLIFF  
PIERZCHAJLO

Architects & Planners Ltd



AUGUST 2015

# blue PRINT

NEWSLETTER

## RPAP TO DESIGN NEW BUILDING ON SURPLUS SCHOOL SITE

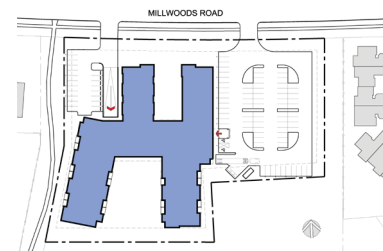


### BIG NEWS

#### CHINESE DELEGATION VISITS RPAP

RPAP recently had a visit from a delegation of architects and designers visiting from China. Edmonton was one stop on a western Canadian tour for the group who were here to learn about the design of seniors care facilities in the west. They spent time at the University of Alberta in discussions with faculty and students and then paid a visit to our offices. We gave them an overview of the different levels of care provided to seniors in Alberta and then walked them through various RPAP designed projects. The presentation ended with a Q&A session and an opportunity for us to ask them some questions. It was a great opportunity to exchange ideas and learn something about each other's cultures and design philosophies. ●

We were excited to recently learn that we will be designing a much needed senior's facility in the Millwoods area of Edmonton. The site, which was meant for a new school that was never built, was rezoned a number of years ago by the City of Edmonton in order to accommodate a multifamily residential building. RPAP will be assisting GEF Seniors Housing with the design of a 158 unit building that will contain lodge and independent living for seniors along with a number of common and community related support spaces. It will include a mixture of market and below market suites resulting in a more sustainable business model for the



client. A series of public consultations vetted the design with the community who were initially apprehensive of the project because of loss of open space. Their concerns were addressed in the design through the placement and shape of the building, the layout of the parking and access from the street. ●

#### RPAP PROJECT USES PREFABRICATED CONSTRUCTION

Construction began in the fall of 2014 for a new mixed-use building in Red Deer. This 5 storey building contains a pharmacy, children's daycare, 69 memory care residents, 45 assisted living residents, and 25 independent living residents. To meet code it had to be built using non-combustible materials so it was decided early on to utilize load bearing light gauge steel framing. The approaching winter construction season, space on site to set up a temporary production facility, and



area for storage pointed early on to prefabrication. While the foundations were being built the pre-manufactured panels were built indoors and then stored on site. Once the foundations were ready the panels were craned into place one floor at a time allowing for the floor structure to be built at each level. It was remarkable how quickly and efficiently it took shape. ●

#### UNDER CONSTRUCTION

- Residents have moved into the Lloydminster Continuing Care Building and we are looking forward to a grand-opening celebration.
- Construction documents are well underway for a new dental surgery building on Calgary Trail in Edmonton.

- Design work for two Points West Living projects is progressing with one project in Cochrane and the other in Wetaskiwin.
- Construction is almost done on the new Hay River Hospital Design-Build project.
- Construction documents are nearing completion for the renovation and addition to the Dr. Cooke extended care building in Lloydminster.